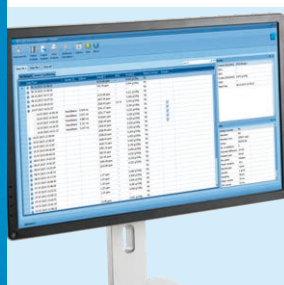


## Easy and Reliable Data Management with EasyDirect™ Titration Software



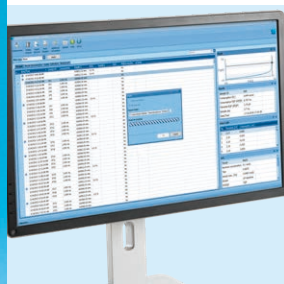
### Result Capture and Storage

The EasyDirect™ Titration Software directly collects titration results and measured values from up to three different EasyPlus™ Titrators. Easily retrieve and manage results, categorized by method type, for each connected titrator.



### Graphical Representation

Observe titration analysis curves graphically with the embedded graph viewer. Show the 1st derivative analysis for equivalence point titrations and guarantee more thorough analysis inspection and documentation.



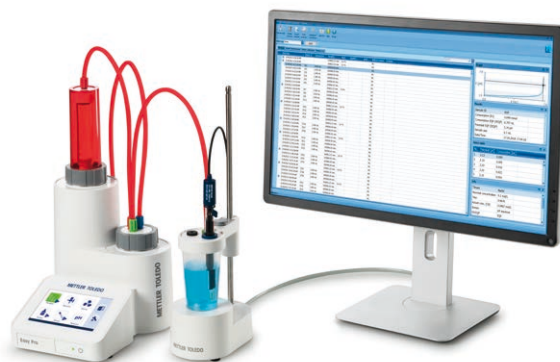
### Print and Export

Tailor which data goes where for single or multiple samples or entire instrument results exported as a .csv file. Print exactly what you want to see (basic data, values table, curve, etc...) for single or multiple sample determinations on your local or network printer.



### Additional Calculation

In addition to the titrator's embedded calculation, EasyDirect offers an additional calculation for each instrument. Expand the functionality of your EasyPlus Titrator with EasyDirect. This improves your titrator through additional statistics functionality for the added calculation.



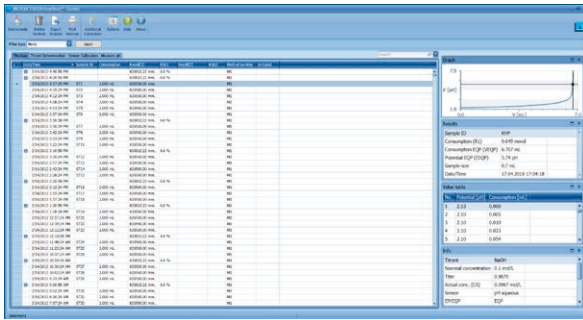
### Simple result data management

Connect your EasyPlus™ Titrator to EasyDirect™ Titration Software and improve your data management. Data collection starts at your PC, archiving results even if the EasyDirect™ Titration Software is not running.

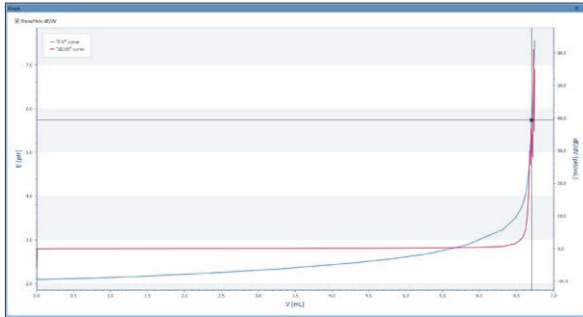
Enjoy the expanded capabilities of result management, including csv file exporting, printing on a network or local printer, additional calculations and titration curve reviews.

Relax in the knowledge that your titration results are stored, collated and easily accessible with EasyDirect™ Titration Software.

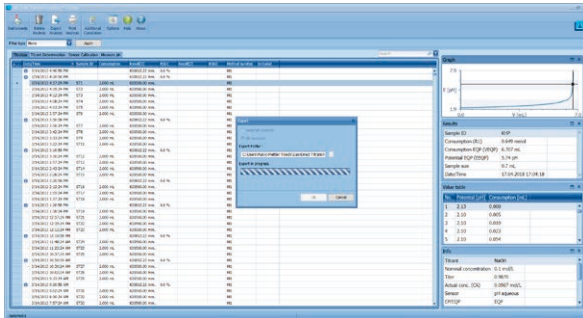
Download your 45 day free trial version on [www.mt.com/easyplustitration](http://www.mt.com/easyplustitration).



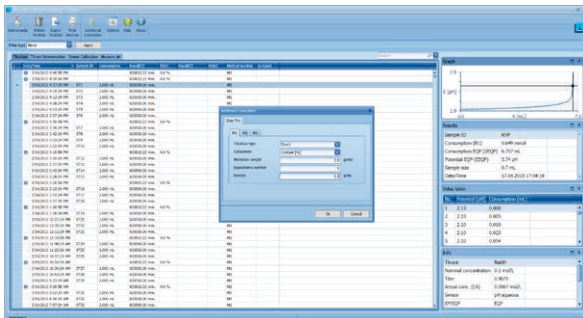
## Result Capture and Storage



## Graphical Representation



## Print and Export



## Additional Calculation

**METTLER TOLEDO Group**  
Analytical  
Local contact: [www.mt.com/contact](http://www.mt.com/contact)

[www.mt.com](http://www.mt.com)

For more information

Subject to technical changes.  
© 06/2018 METTLER TOLEDO  
All rights reserved. 30073754A  
Marketing Titration / MarCom Analytical