



MODEL IDS606 Series SDS Load cell

SDS LOAD CELL
HIGH PRECISION
& PERFORMANCE

Features

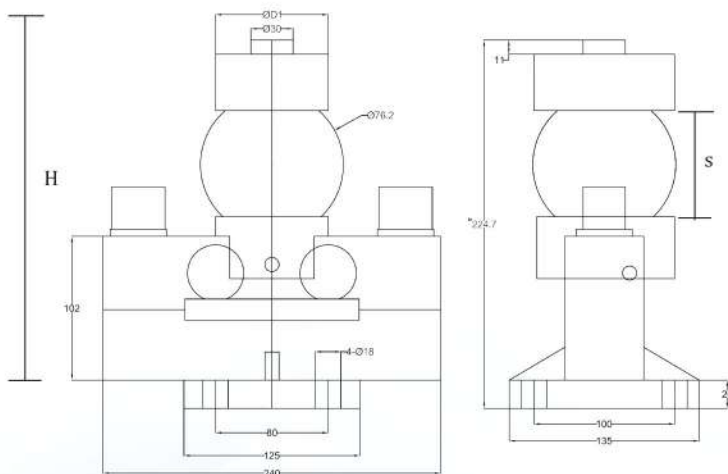
- Steel constuction
- Japanese technology applied
- Special rubber for high humidity protection



Specification

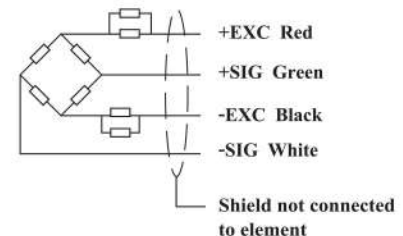
PARAMETER	VALUE	UNIT
Capacity	10, 20, 25, 30, 40, 50	T
Rated output	2 ± 0.01	mV/v
Zero balance	± 0.02	mV/v
Input resistance	760 ± 10	Ohms
Output resistance	702 ± 2	Ohms
Non linearity	± 0.025	% R.O.
Hysteresis	± 0.030	% R.O.
Non-repeatability	0.025	% R.O.
Creep	± 2	$\mu\text{V} / 12\text{V} / 80 \% \text{R.O.} / 1\text{min}$
Zero shift	± 2	$\mu\text{V} / 12\text{V} / 1 \text{min}$
Power on stability	± 2	$\mu\text{V} / 12\text{V} / 2 \text{min}$
Operating temperature range	-10~+40	°C
Excitation recommeded	-35~+65	V
Safe overload	150	% R.O.
Insulation resistance	$\geq 5000 (50 \text{ VDC})$	Mega-Ohms
Cable , Length	$\phi 6 \text{ mm} \times 16 \text{ m}$	

All specifications listed are subject to change without notice.



Dimension	D1	D2	H
Capacity			
10,20,30T	85~88	76.2	224.7
40T	88	76.2	230.7

Color code of cable for capacity 10t , 20t , 25t ,40t , 50t



Color code of cable for capacity 30t only

