



SDS LOAD CELL
HIGH PRECISION
& PERFORMANCE

MODEL IDS608 Series

SDS Load cell

Features

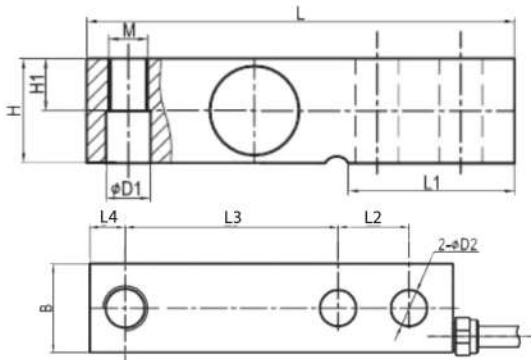
- Shear beam load cells
- Alloy steel construction
- Japanese technology applied
- Special rubber for high humidity protection
- Special silicone for surface coating



Specification

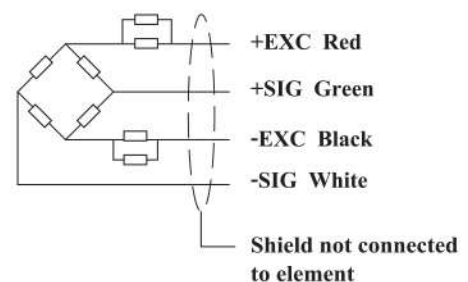
PARAMETER	VALUE	UNIT
Capacity	250, 500, 1000, 1500, 2000, 2500, 3000, 5000	kg
	1, 2.5, 4, 5-SE, 5, 7.5, 10	Klb
Rated output	3 ± 0.06	mV/V
Zero balance	± 0.02	mV/V
Input resistance	385 ± 2	Ohms
Output resistance	350 ± 2	Ohms
Non linearity	± 0.02	80 % R.O. / 100%/CHECK
Hysteresis	± 0.02	80 % R.O. / 100%/CHECK
Non-repeatability	± 0.01	80 % R.O. / 100% CHECK
Creep	± 4	$\mu\text{V} / 12\text{V} / 80 \% \text{ R.O.} / 3\text{min} / 100\% \text{ CHECK}$
Zero shift	± 2	$\mu\text{V} / 12\text{V} / 80 \% \text{ R.O.} / 3\text{min} / 100\% \text{ CHECK}$
Power on stability	± 2	$\mu\text{V} / 12\text{V} / 3 \text{ min}$
Temperature effect on zero	± 0.02	% R.O. / 10 °C
Temperature effect on rated output	± 0.02	% R.O. / 10 °C
Compensated Temperature Range	-10~40	°C
Operating Temperature Range	-20~60	°C
Excitation recommended	$\pm 5 \sim 15$	V
Safe overload	150	% R.O.
Insulation resistance	$\geq 5000 (50 \text{ VDC})$	Mega-Ohms
Cable , Length		$\phi 5\text{mm} \times 4\text{m}$

All specifications listed are subject to change without notice.



CAPACITY		L	L1	L2	L3	L4	H	H1	B	D1	D2	M
500,1000,1500,2000kg	mm	130	54	25.4	76.2	12.7	31.8	16.0	31.8	13.5	13	M12 x 1.75
1 Klb , 2.5 Klb, 4Klb, 5Klb -SE	mm	130	54	25.4	76.2	12.7	31.8	16.0	31.8	13.5	13	½-20 UNF
2500kg,3000kg,5000kg	mm	171.5	72.6	38.1	95.3	19	38.1	19.1	38.1	19.8	19.8	M20 x 1.5
5 Klb , 10 Klb	inch	6.75	2.86	1.5	3.75	0.75	1.5	0.75	1.5	0.78	0.78	¾-16 UNF

Color code of cable



LOAD

Check zero balance



Bottom frame