



MODEL IDS608-M Series SDS Load cell

Features

SDS LOAD CELL
HIGH PRECISION
& PERFORMANCE

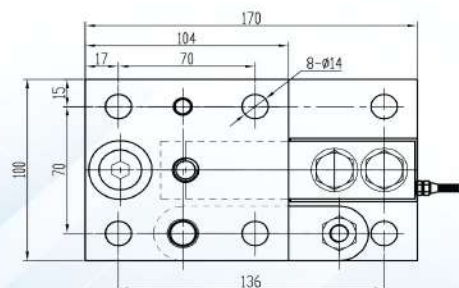
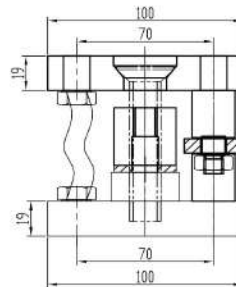
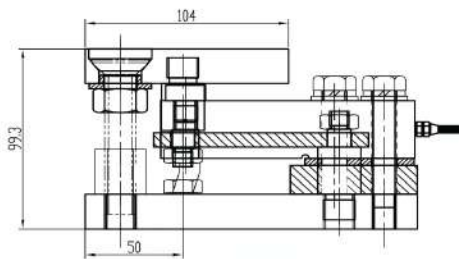
- Shear beam floor scale
- Alloy steel construction
- Japanese technology applied
- Special rubber for high humidity protection
- Special silicone for surface coating
- 6 Cable wires for dropping signal protection



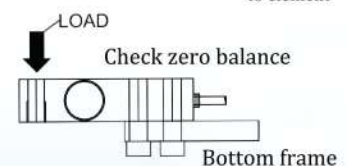
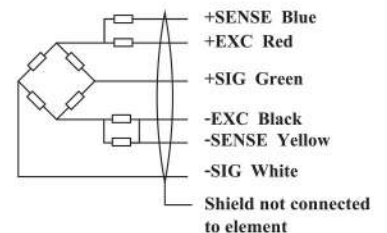
Specification

PARAMETER	VALUE	UNIT
Capacity	250, 500, 1000, 1500, 2000, 2500, 3000, 5000	kg
	1, 2.5, 4, 5-SE, 5, 7.5, 10	Klb
Rated output	3 ± 0.06	mV/V
Zero balance	± 0.02	mV/V
Input resistance	385 ± 3	Ohms
Output resistance	350 ± 2	Ohms
Non linearity	± 0.02	% R.O.
Hysteresis	± 0.02	% R.O.
Non-repeatability	0.02	% R.O.
Creep	± 2	$\mu\text{V} / 12\text{V} / 80 \% \text{ R.O.} / 1\text{min}$
Zero shift	± 2	$\mu\text{V} / 12\text{V} / 80 \% \text{ R.O.} / 1\text{min}$
Power on stability	± 2	$\mu\text{V} / 12\text{V} / 2 \text{ min}$
Temperature effect on zero	± 0.05	% R.O / 10 °C
Temperature effect on rated output	± 0.02	% R.O / 10 °C
Excitation recommended	$\pm 5 \sim 15$	V
Safe overload	150	% R.O.
Insulation resistance	$\geq 5000 (50 \text{ VDC})$	Mega-Ohms
Cable , Length	$\phi 5\text{mm} \times 4\text{m}$	

All specifications listed are subject to change without notice.



Color code of cable



CAPACITY		L	L1	L2	L3	W	W1	D	T
500,1000,1500,2000kg	mm	130	25	76	13	38	32	14	M12 x 1.75
1 Klb , 2.5 Klb, 4Klb, 5Klb -SE	Inch	5.1	1	3	0.5	1.5	1.3	0.5	½-20 UNF
2500kg,3000kg,5000kg	mm	172	38	95	19	44	38	20	M20 x 1.5
5 Klb , 10 Klb	Inch	6.8	1.5	3.8	0.8	1.7	1.5	0.8	¾-16 UNF