



MODEL IDS610 Series SDS Load cell

SDS LOAD CELL
HIGH PRECISION
& PERFORMANCE

Features

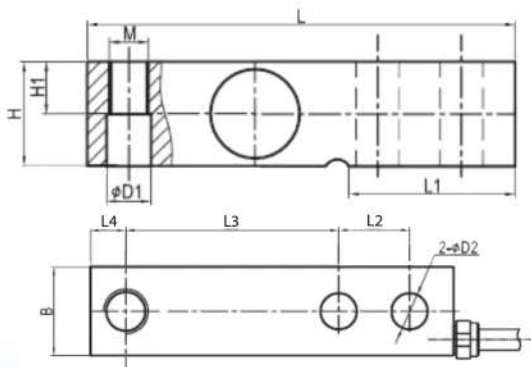
- Alloy steel constuction
- Japanese technology applied
- Special rubber for high humidity protection
- 6 Cable wires for protected dropping signal



Specification

PARAMETER	VALUE	UNIT
Capacity	250 , 500 , 1000 , 2000	kg
Rated output	2 ± 0.004	mV/V
Zero balance	± 0.02	mV/V
Input resistance	385 ± 2	Ohms
Output resistance	350 ± 2	Ohms
Non linearity	± 0.02	% R.O.
Hysteresis	± 0.02	% R.O.
Non-repeatability	0.02	% R.O.
Creep	± 4	$\mu\text{V} / 12\text{V} / 80\% \text{ R.O.} / 3\text{min}$
Zero shift	± 2	$\mu\text{V} / 12\text{V} / 80\% \text{ R.O.} / 3\text{min}$
Power on stability	± 2	$\mu\text{V} / 12\text{V} / 3 \text{ min}$
Temperature effect on zero	± 0.05	% R.O / 10 °C
Temperature effect on rated output	± 0.02	% R.O / 10 °C
Operating temperature range	-10~+40	°C
Excitation recommended	5~15	V
Safe overload	150	% R.O.
Insulation resistance	$\geq 5000 (50 \text{ VDC})$	Mega-Ohms
Cable , Length		$\varnothing 5 \text{ mm} \times 4 \text{ m}$

All specifications listed are subject to change without notice.



CAPACITY		L	L1	L2	L3	L4	H	H1	B	D1	D2	M
500,1000,1500,2000kg	mm	130	54	25.4	76.2	12.7	31.8	16.0	31.8	13.5	13	M12 x 1.75

Color code of cable

