



MODEL IDS649 Series SDS Load cell

SDS LOAD CELL
HIGH PRECISION
& PERFORMANCE

Features

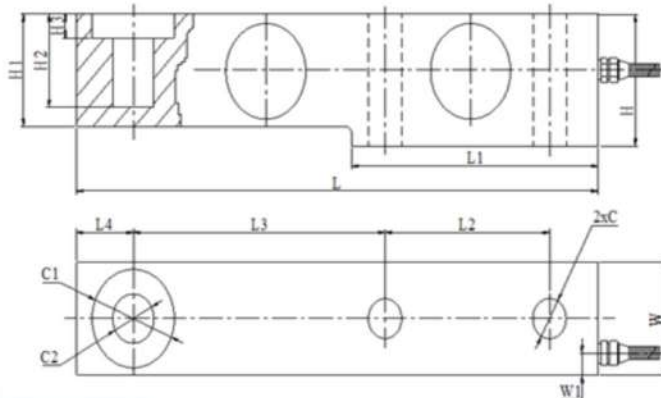
- Alloy steel construction
- Japanese technology applied
- Special rubber for high humidity protection
- Special silicone surface coating



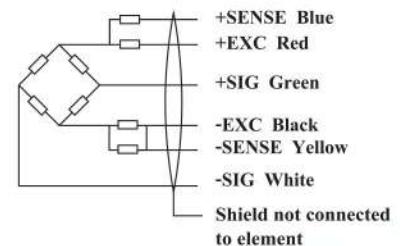
Specification

PARAMETER	VALUE	UNIT
Capacity	500 , 1000 , 2000, 3000, 5000, 7500 ,8000 , 10000	kg
Rated output	2 ± 0.2	mV/V
Zero balance	± 0.05	mV/V
Input resistance	385± 10	Ohms
Output resistance	350 ± 2	Ohms
Non linearity	± 0.02	% R.O.
Hysteresis	± 0.02	% R.O.
Non-repeatability	0.02	% R.O.
Creep	± 2	µV / 12V / 80% R.O./1min
Zero shift	± 2	µV / 12V / 80% R.O./1min
Power on stability	± 2	µV / 12V / 2 min
Temperature effect on zero	± 0.05	% R.O / 10 °C
Temperature effect on rated output	± 0.02	% R.O / 10 °C
Operating temperature range	-10 ~ +40	°C
Excitation recommended	5 ~ 12	V
Safe overload	150	% R.O.
Insulation resistance	≥ 5000 (50 VDC)	Mega-Ohms
Cable , Length	ø 5 mm x 4 m	

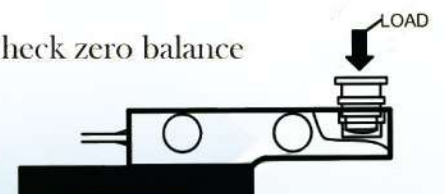
All specifications listed are subject to change without notice.



Color code of cable



Check zero balance



Rated capacity	L	L1	L2	L3	L4	H	H1	H2	C	C1	C2	W	W1
300Kg ~ 3T	203	95	64	98	22	43	36.6	30.5	8	ø13	ø16	36.6	7
5T ~ 8t	235	110	66	124	22	52	48	30	12	ø21	ø22	48	7
10t	279	133	82	140	32	67	60	20	8.5	ø28	ø32	60	8.5

Bottom frame