



# MODEL IDS651 Series SDS Load cell

SDS LOAD CELL  
HIGH PRECISION  
& PERFORMANCE

## Features

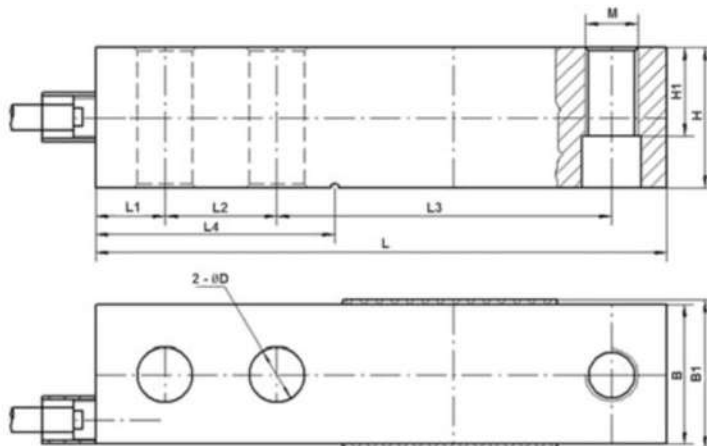
- Alloy steel construction
- Japanese technology applied
- Special rubber for high humidity protection
- Special silicone surface coating



## Specification

PARAMETER	VALUE	UNIT
Capacity	10	T
Rated output	$2 \pm 0.2$	mV/V
Zero balance	$\pm 0.01$	mV/V
Input resistance	$385 \pm 10$	Ohms
Output resistance	$350 \pm 2$	Ohms
<b>Non linearity</b>	<b><math>\pm 0.02</math></b>	<b>% R.O.</b>
<b>Hysteresis</b>	<b><math>\pm 0.02</math></b>	<b>% R.O.</b>
Non-repeatability	0.02	% R.O.
Creep	$\pm 2$	$\mu\text{V} / 12\text{V} / 80\% \text{ R.O.} / 1\text{min}$
<b>Zero shift</b>	<b><math>\pm 2</math></b>	<b><math>\mu\text{V} / 12\text{V} / 80\% \text{ R.O.} / 1\text{min}</math></b>
<b>Power on stability</b>	<b><math>\pm 2</math></b>	<b><math>\mu\text{V} / 12\text{V} / 2 \text{ min}</math></b>
Temperature effect on zero	$\pm 0.05$	% R.O. / 10 °C
Temperature effect on rated output	$\pm 0.02$	% R.O. / 10 °C
Operating temperature range	-10 ~ +40	°C
Excitation recommended	5 ~ 12	V
Safe overload	150	% R.O.
Insulation resistance	$\geq 5000$ (50 VDC)	Mega-Ohms
Cable , Length	$\varnothing 5 \text{ mm} \times 4 \text{ m}$	

All specifications listed are subject to change without notice.



Rated capacity	L	L1	L2	L3	L4	B	B1	H	H1	ØD	M
10T	222.3	25.4	50.8	120.7	101.6	50.8	52.4	50.8	25.4	26	M24 x 2

### Color code of cable

