



# MODEL IDS676 Series SDS Load cell

SDS LOAD CELL  
HIGH PRECISION  
& PERFORMANCE

## Features

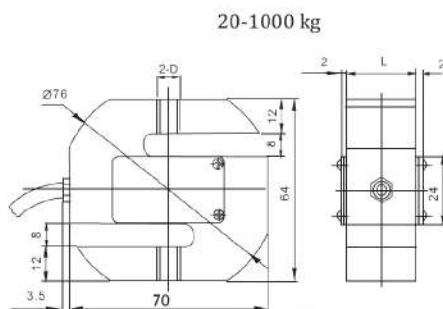
- Alloy steel construction
- Suitable for hopper , packing  
electronical combined scale, etc
- Protection class IP67



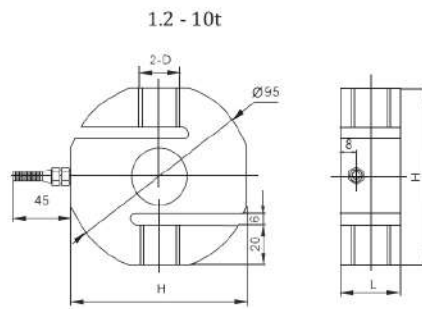
## Specification

PARAMETER	VALUE	UNIT
Capacity	20, 30, 50, 75, 100, 150, 200, 250, 300, 500, 700, 750 1000, 1500, 2000, 3000, 5000, 7500 , 10000	Kg
Rated output	2.0	mV/V
Zero balance	± 1	mV/V
Input resistance	400 ± 10	Ohms
Output resistance	352 ± 5	Ohms
<b>Non linearity</b>	<b>± 0.03</b>	<b>% F.S.</b>
<b>Hysteresis</b>	<b>± 0.03</b>	<b>% F.S.</b>
Non-repeatability	<b>0.03</b>	% R.O.
Creep	± 2	µ V / 12V / 80% F.S./1min
<b>Zero shift</b>	<b>± 2</b>	<b>µ V / 12V / 80% F.S./1min</b>
<b>Power on stability</b>	<b>± 2</b>	<b>µ V / 12V / 2 min</b>
Temperature effect on zero	± 0.02	% F.S. / 10 °C
Temperature effect on rated output	± 0.02	% F.S. / 10 °C
Operating temperature range	-10 ~ +40	°C
Excitation recommended	10 ~ 12	V
Safe overload	150	% R.O.
Insulation resistance	≥ 5000 (50 VDC)	Mega-Ohms
Cable , Lenght	ø 5 mm x 2.5 m	

All specifications listed are subject to change without notice.



Rated Load	D	L
20 - 150kg	M8	12
200 - 500kg	M12	20
700 - 1t	M12	25



Rated Load	D	L	H
1.2 - 5t	M20	32	90
7.5t	M24	40	90
10t	M30	50	110

Color code of cable

