

TEST SIEVE

200mm Ø
50mm H

STAINLESS
STEEL FRAME

200



C I S a 
SIEVING TECHNOLOGIES



200

200mm Ø x 50mm H

STAINLESS STEEL FRAME



Request
Calibration Certificate
Service sieve



The sieve recommended by ISO, AFNOR, ASTM, BS, DIN, UNE standards.

Suitable for wet sieving.

Each sieve is laser marked with a serial number to ensure traceability.

Delivered with a Certificate of Compliance according to 2.1 EN 10204.

Mirror polished.

Frame material: AISI-304.

Weight: From 300 grams to 500 grams depending on the mesh opening.

Recommended sample volumes depending on the opening:

Opening	Volume	Opening	Volume	Opening	Volume
38 µ	25 cm ³	125 µ	50 cm ³	2.00 mm.	200 cm ³
45 µ	30 cm ³	250 µ	70 cm ³	4.00 mm.	350 cm ³
63 µ	35 cm ³	500 µ	100 cm ³	8.00 mm.	500 cm ³
90 µ	40 cm ³	1.00 mm	140 cm ³	16.00 mm	1000 cm ³

ATTENTION

200 mm sieves are not compatible with 8" sieves (203 mm Ø)

OPTIONS

- Calibration certificate with uncertainty value.
- Metal identification label.
- AISI-316 (1.4404) stainless steel frame.



CONFIGURATIONS

200.1 Wire mesh screens, standards ISO 3310.1 – ASTM E-11-2013

200.2 Sieves with perforated plate, square holes. Standards ISO 3310.2 – ASTM E-323-2011

200.3 Sieves with perforated plate, round holes, standards ISO 3310.2 – ASTM E-323-2011

200.4 Sieves with perforated plates elongated, standard ISO 5223

200.5 Sieves with electroformed plates, standards ISO 3310.3 – ASTM E-161

INCLUDES

- ✓ Individual packing of each sieve with 100% recycled cardboard box, **which guarantees transport in perfect conditions.**
- ✓ Test certificate according to standard 2.1. EN 10204.

ACCESSORIES

- Cover 200mm.Ø (code 0800001).
- Cover 200mm.Ø wet way (code 0800004).
- Pan 200mm.Ø x 50mm.H (code 0800002).
- Pan 200mm.Ø x 50mm.H wet way (code 0800005).
- O ring 200mm.Ø (code J200).

200

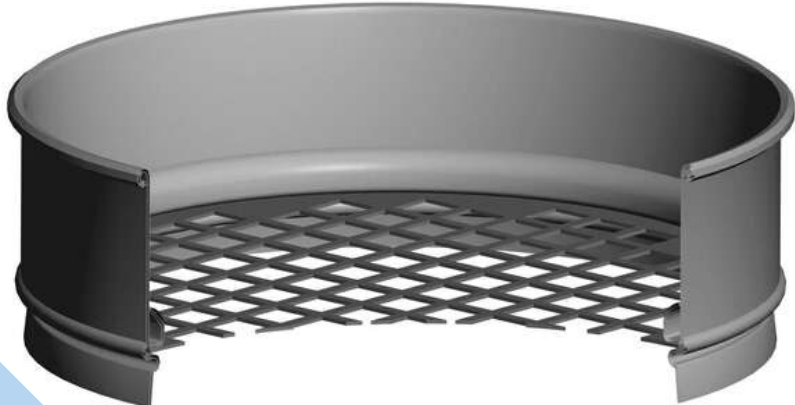
200mm Ø x 50mm H

STAINLESS STEEL FRAME



200.1 WIRE MESH SIEVES

ISO 3310.1	ASTM E-11-2013	Code CISA	ISO 3310.1	ASTM E-11-2013	Code CISA	ISO 3310.1	ASTM E-11-2013	Code CISA	ISO 3310.1	ASTM E-11-2013	Code CISA
20 µ	Nº 635	0800601	160 µ		0804801	1.00 mm	Nº 18	0809001	11.20 mm	7/16 in.	0814601
25 µ	Nº 500	0800801	180 µ	Nº 80	0805001	1.12 mm		0809201	12.50 mm	½ in.	0814801
32 µ	Nº 450	0801001	200 µ		0805201	1.18 mm	Nº 16	0809401	13.20 mm	0.530 in.	0815001
36 µ		0801201	212 µ	Nº 70	0805401	1.25 mm		0809601	14.00 mm		0815201
38 µ	Nº 400	0801401	224 µ		0805601	1.40 mm	Nº 14	0809801	16.00 mm	5/8 in.	0815401
40 µ		0801601	250 µ	Nº 60	0805801	1.60 mm		0810001	18.00 mm		0815601
45 µ	Nº 325	0801801	280 µ		0806001	1.70 mm	Nº 12	0810201	19.00 mm	3/4 in.	0815801
50 µ		0802001	300 µ	Nº 50	0806201	1.80 mm		0810401	20.00 mm		0816001
53 µ	Nº 270	0802201	315 µ		0806401	2.00 mm	Nº 10	0810601	22.40 mm	7/8 in.	0816201
56 µ		0802401	355 µ	Nº 45	0806601	2.24 mm		0810801	25.00 mm	1.00 in.	0816401
63 µ	Nº 230	0802601	400 µ		0806801	2.36 mm	Nº 8	0811001	26.50 mm	1.06 in.	0816601
71 µ		0802801	425 µ	Nº 40	0807001	2.50 mm		0811201	28.00 mm		0816801
75 µ	Nº 200	0803001	450 µ		0807201	2.80 mm	Nº 7	0811401	31.50 mm	1 1/4 in.	0817001
80 µ		0803201	500 µ	Nº 35	0807401	3.15 mm		0811601	35.50 mm		0817201
90 µ	Nº 170	0803401	560 µ		0807601	3.35 mm	Nº 6	0811801	37.50 mm	1 1/2 in.	0817401
100 µ		0803601	600 µ	Nº 30	0807801	3.55 mm		0812001	40.00 mm		0817601
106 µ	Nº 140	0803801	630 µ		0808001	4.00 mm	Nº 5	0812201	45.00 mm	1 3/4 in.	0817801
112 µ		0804001	710 µ	Nº 25	0808201	4.50 mm		0812401	50.00 mm	2.00 in.	0818001
125 µ	Nº 120	0804201	800 µ		0808401	4.75 mm	Nº 4	0812601	53.00 mm	2.12 in.	0818201
140 µ		0804401	850 µ	Nº 20	0808601	5.00 mm		0812801	56.00 mm		0818401
150 µ	Nº 100	0804601	900 µ		0808801	5.60 mm	Nº 3½	0813001	63.00 mm	2 1/2 in.	0818601
						6.30 mm	¼ in.	0813201	71.00 mm		0818801
						6.70 mm	0.265 in.	0813401	75.00 mm	3.00 in.	0819001
						7.10 mm		0813601	80.00 mm		0819201
						8.00 mm	5/16 in.	0813801	90.00 mm	3 1/2 in.	0819401
						9.00 mm		0814001	100.00 mm	4.00 in.	0819601
						9.50 mm	3/8 in.	0814201	106.00 mm	4.24 in.	0819801
						10.00 mm		0814401	112.00 mm		0820001
									125.00 mm	5.00 in.	0820201



200

200mm Ø x 50mm H

STAINLESS STEEL FRAME



200.2 SIEVES WITH PERFORATED PLATE

Square holes

The sieves with perforated plates included in this list strictly comply with the quality criteria required by ASTM E-323 and ISO 3310.2, as well as with regard to openings and distances between centres and thicknesses.

To avoid partial perforations with possible error in the screening result, the plates are not perforated in the area in contact with the frame.

The standard EN 933-2 recommends the use of sieves with square perforated plates (according to ISO 3310.2), when the opening is 4 mm. or more.

ISO 3310.2	ASTM E-323-2011	Code CISA	ISO 3310.2	ASTM E-323-2011	Code CISA
4.00 mm	5/32 in.	0812261	22.40 mm	7/8 in.	0816261
4.50 mm		0812461	25.00 mm	1.00 in.	0816461
4.75 mm	3/16 in.	0812661	26.50 mm	1 1/18 in.	0816661
5.00 mm		0812861	28.00 mm		0816861
5.60 mm	7/32 in.	0813061	31.50 mm	1 1/4 in.	0817061
6.30 mm	¼ in.	0813261	35.50 mm		0817261
6.70 mm	17/64 in.	0813461	37.50 mm	1 1/2 in.	0817461
7.10 mm		0813661	40.00 mm		0817661
8.00 mm	5/16 in.	0813861	45.00 mm	1 3/4 in.	0817861
9.00 mm		0814061	50.00 mm	2.00 in.	0818061
9.50 mm	3/8 in.	0814261	53.00 mm	2 1/8 in.	0818261
10.00 mm		0814461	56.00 mm		0818461
11.20 mm	7/16 in.	0814661	63.00 mm	2 1/2 in.	0818661
12.50 mm	½ in.	0814861	71.00 mm		0818861
13.20 mm	0.530 in.	0815061	75.00 mm	3.00 in.	0819061
14.00 mm		0815261	80.00 mm		0819261
16.00 mm	5/8 in.	0815461	90.00 mm	3 1/2 in.	0819461
18.00 mm		0815661	100.00 mm	4.00 in.	0819661
19.00 mm	3/4 in.	0815861	106.00 mm	4.24 in.	0819861
20.00 mm		0816061	112.00 mm		0820061
			125.00 mm	5.00 in.	0820261

Material of the perforated plates

Stainless steel AISI-304



200

200mm Ø x 50mm H

STAINLESS STEEL FRAME



200.3 SIEVES WITH PERFORATED PLATE

Round holes



The sieves with the perforations 0.50 mm Ø, 1.00 mm Ø, 1.80 mm Ø, 4.00 mm Ø and 4.50 mm Ø are used for testing rapeseed, rice, soybean and other cereals.

Material of the perforated plates

Stainless steel AISI-304

ISO 3310.2	Code CISA	ISO 3310.2	Code CISA
0.50 mm.Ø	0807441	11.20 mm.Ø	0814641
1.00 mm.Ø	0809041	12.50 mm.Ø	0814841
1.80 mm.Ø	0810441	13.20 mm.Ø	0815041
2.00 mm.Ø	0810641	14.00 mm.Ø	0815241
2.50 mm.Ø	0811241	16.00 mm.Ø	0815441
3.55 mm.Ø	0812041	18.00 mm.Ø	0815641
4.00 mm.Ø	0812241	19.00 mm.Ø	0815841
4.50 mm.Ø	0812441	20.00 mm.Ø	0816041
4.75 mm.Ø	0812641	22.40 mm.Ø	0816241
5.00 mm.Ø	0812841	25.00 mm.Ø	0816441
5.60 mm.Ø	0813041	26.50 mm.Ø	0816641
6.30 mm.Ø	0813241	28.00 mm.Ø	0816841
6.70 mm.Ø	0813441	31.50 mm.Ø	0817041
7.10 mm.Ø	0813641	35.50 mm.Ø	0817241
8.00 mm.Ø	0813841	37.50 mm.Ø	0817441
9.00 mm.Ø	0814041	40.00 mm.Ø	0817641
9.50 mm.Ø	0814241	45.00 mm.Ø	0817841
10.00 mm.Ø	0814441	50.00 mm.Ø	0818041

Non-standardized round openings

ISO 3310.2	Code CISA	ISO 3310.2	Code CISA
11.00 mm.Ø	0814541	21.00 mm.Ø	0816081
12.00 mm.Ø	0814741	22.00 mm.Ø	0816141
13.00 mm.Ø	0814941	24.00 mm.Ø	0816341
14.50 mm.Ø	0815341	30.00 mm.Ø	0816941
15.00 mm.Ø	0815381	32.00 mm.Ø	0817141

Other openings on request

ACCESSORIES

Pan and Cover
200 mm. Ø x 50 mm. H

Wet sieving
pan and cover 200 mm. Ø

Cleaning kit

Calibration certificate
with uncertainty value



200

200mm Ø x 50mm H

STAINLESS STEEL FRAME



200.4 SIEVES WITH PERFORATED PLATE

Elongated holes



Opening	Code CISA	Opening	Code CISA
1.00 x 20.00 mm	0830081	2.80 x 20.00 mm	0831481
1.50 x 20.00 mm	0830181	2.90 x 20.00 mm	0831581
1.70 x 20.00 mm	0830281	3.00 x 20.00 mm	0831681
1.80 x 20.00 mm	0830381	3.20 x 20.00 mm	0831781
1.90 x 20.00 mm	0830481	3.55 x 20.00 mm	0831881
2.00 x 20.00 mm	0830581	4.75 x 20.00 mm	0831981
2.10 x 20.00 mm	0830681	4.50 x 25.00 mm	0832181
2.20 x 20.00 mm	0830781	4.75 x 25.00 mm	0831981
2.30 x 20.00 mm	0830981	5.60 x 25.00 mm	0832081
2.40 x 20.00 mm	0831081	5.00 x 30.00 mm	0832281
2.50 x 20.00 mm	0831181	5.75 x 30.00 mm	0832381
2.60 x 20.00 mm	0831281	6.00 x 30.00 mm	0832481

The sieves mounted with elongated perforated plates are completely made of AISI-304 stainless steel. Their main field of application is the grain and cereal industry.

To obtain total accuracy in the tests, the plates are not perforated in the area in contact with the frame, which avoids partial holes that could potentially falsify the results.

200.5 SIEVES WITH ELECTROFORMED PLATES

Square holes

Sieves with electroformed sheets have much smaller tolerances than sieves with wire mesh. The tolerance for this type of sieve is +/- 2%. Compared to sieves with metal mesh, this tolerance is two to ten times higher, depending on the size of the opening.

These sieves with electroformed plates are used both for small sample sizes and for special materials, and above all for high-precision quality control. Each sieve is delivered with a certificate of conformity.

Opening	Code CISA	Opening	Code CISA
5 µ	0800151	90 µ	0803451
10 µ	0800251	106 µ	0803651
15 µ	0800451	125 µ	0804251
20 µ	0800651	150 µ	0804651
25 µ	0800851	180 µ	0805051
32 µ	0801051	212 µ	0805451
38 µ	0801451	250 µ	0805851
45 µ	0801851	300 µ	0806251
53 µ	0802251	355 µ	0806651
63 µ	0802651	425 µ	0807051
75 µ	0803051	500 µ	0807451

Due to the high price, compared to sieves with wire mesh, their use is limited to applications where the special qualities of the sieves are required. Sieves with electroformed plates are precision instruments that have to be treated with care.